



## FortiGate/FortiWiFi® 60E Series

Integrated Threat Management  
for Small Networks



## FortiGate/FortiWiFi® 60E Series

FortiGate 60E, FortiWiFi 60E

The FortiGate/FortiWiFi 60E Series are compact, all-in-one security appliances that deliver Fortinet's Connected UTM. Ideal for small business, remote, customer premise equipment (CPE) and retail networks, these appliances offer the network security, connectivity and performance you need at a single low per-device price.

### Consolidated Security Solutions

You get advanced threat protection, including firewall, application control, advanced threat protection, IPS, VPN, and web filtering, all from one device that's easy to deploy and manage. With our FortiGuard® security subscription services you'll have automated protection against today's sophisticated threats.

Reduce the need for additional wireless access points by integrating a high-bandwidth "fat-client" into your FortiGate with the FortiWiFi 60E. It's also a great option to secure mobile devices in BYOD environments with automatic device identification and customizable access and security policies.

VDOMs on the FortiGate/FortiWiFi 60E let you segment networks to enable guest and employee access, or protect things like cardholder data. You get the flexibility to match your business needs and meet compliance standards like PCI and HIPAA.

### Features & Benefits

- Superior throughput performance ensures your network security won't be a bottleneck
- Up to 2x WAN, 7x LAN and 1x DMZ interface ports
- Runs on FortiOS 5 — the most powerful security operating system in the world delivers more security to fight advanced threats, more control to secure mobile devices, and more intelligence to build secure policies

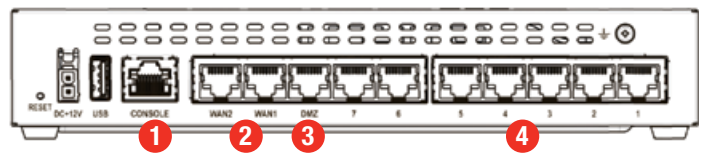
### Highlights

Firewall Performance	IPS Performance	Interfaces
3 Gbps	1.4 Gbps	Multiple GE RJ45



## HARDWARE

### FortiGate/FortiWiFi 60E



### Interfaces

1. Console Port
2. 2x GE RJ45 WAN Ports

3. 1x GE RJ45 DMZ Ports
4. 7x GE RJ45 Internal Ports



### Powered by FortiASIC SoC3

- Combines a RISC-based CPU with Fortinet's proprietary FortiASIC™ content and network processors for unmatched performance
- Simplifies appliance design and enables breakthrough performance for smaller networks
- Supports firewall acceleration across all packet sizes for maximum throughput
- Delivers accelerated UTM content processing for superior performance and protection
- Accelerates VPN performance for high speed, secure remote access

### 3G/4G WAN Connectivity

The FortiGate/FortiWiFi 60E Series includes a USB port that allows you to plug in a compatible third-party 3G/4G USB modem, providing additional WAN connectivity or a redundant link for maximum reliability.

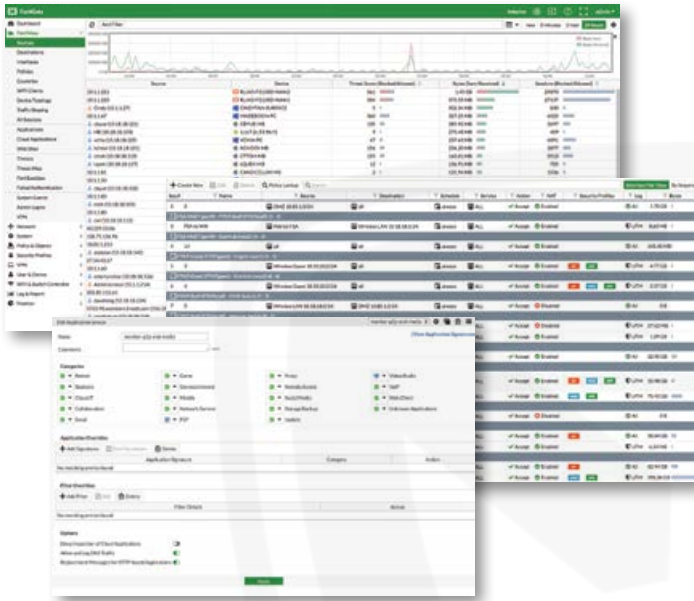
### Compact and Reliable Form Factor

Designed for small environments, you can place it on a desktop or wall-mount it. It is small, lightweight yet highly reliable with superior MTBF (Mean Time Between Failure), minimizing the chance of a network disruption.

### Superior Wireless Coverage

A built-in dual-band, dual-stream access point with internal antennas is integrated on the FortiWiFi 60E and provides speedy 802.11ac coverage on both 2.4 GHz and 5 GHz bands. The dual-band chipset addresses the PCI-DSS compliance requirement for rogue AP wireless scanning, providing maximum protection for regulated environments.

## SOFTWARE



FortiOS Management UI —  
FortiView, Policy Table and Application Control Panel

### FortiOS

Control all the security and networking capabilities across the entire FortiGate platform with one intuitive operating system. Reduce operating expenses and save time with a truly consolidated next generation security platform.

- A truly consolidated platform with one OS for all security and networking services for all FortiGate platforms.
- Industry-leading protection: NSS Labs Recommended, VB100, AV Comparatives and ICSCA validated security and performance.
- Control thousands of applications, block the latest exploits, and filter web traffic based on millions of real-time URL ratings.
- Detect, contain and block advanced attacks automatically in minutes with integrated advanced threat protection framework.
- Solve your networking needs with extensive routing, switching, WiFi, LAN and WAN capabilities.
- Activate all the ASIC-booster capabilities you need on the fastest firewall platform available.



For more information, please refer to the FortiOS data sheet available at [www.fortinet.com](http://www.fortinet.com)

## SERVICES

### FortiGuard™ Security Services

FortiGuard Labs offers real-time intelligence on the threat landscape, delivering comprehensive security updates across the full range of Fortinet's solutions. Comprised of security threat researchers, engineers, and forensic specialists, the team collaborates with the world's leading threat monitoring organizations, other network and security vendors, as well as law enforcement agencies:

- **Real-time Updates** — 24x7x365 Global Operations research security intelligence, distributed via Fortinet Distributed Network to all Fortinet platforms.
- **Security Research** — FortiGuard Labs have discovered over 170 unique zero-day vulnerabilities to date, totaling millions of automated signature updates monthly.
- **Validated Security Intelligence** — Based on FortiGuard intelligence, Fortinet's network security platform is tested and validated by the world's leading third-party testing labs and customers globally.



For more information, please refer to <http://forti.net/guard>

### FortiCare™ Support Services

Our FortiCare customer support team provides global technical support for all Fortinet products. With support staff in the Americas, Europe, Middle East and Asia, FortiCare offers services to meet the needs of enterprises of all sizes:

- **Enhanced Support** — For customers who need support during local business hours only.
- **Comprehensive Support** — For customers who need around-the-clock mission critical support, including advanced exchange hardware replacement.
- **Premium Services** — For global or regional customers who need an assigned Technical Account Manager, enhanced service level agreements, extended software support, priority escalation, on-site visits and more.
- **Professional Services** — For customers with more complex security implementations that require architecture and design services, implementation and deployment services, operational services and more.



For more information, please refer to <http://forti.net/care>

# SPECIFICATIONS

	FORTIGATE 60E	FORTIWIFI 60E
<b>Hardware Specifications</b>		
GE RJ45 WAN Ports	2	2
GE RJ45 Internal Ports	7	7
GE RJ45 PoE Ports	–	–
GE RJ45 DMZ Ports	1	1
Wireless Interface	–	802.11 a/b/g/n/ac
USB Ports	1	1
Console (RJ45)	1	1
<b>System Performance</b>		
Firewall Throughput (1518 / 512 / 64 byte UDP packets)	3 / 3 / 3 Gbps	
Firewall Latency (64 byte UDP packets)	3 μs	
Firewall Throughput (Packets Per Second)	4.5 Mpps	
Concurrent Sessions (TCP)	1.3 Million	
New Sessions/Second (TCP)	30,000	
Firewall Policies	5,000	
IPsec VPN Throughput (512 byte packets)	2 Gbps	
Gateway-to-Gateway IPsec VPN Tunnels	200	
Client-to-Gateway IPsec VPN Tunnels	500	
SSL-VPN Throughput	150 Mbps	
Concurrent SSL-VPN Users (Recommended Maximum)	100	
IPS Throughput (HTTP / Enterprise Mix)	1,400 / 350 Mbps	
SSL Inspection Throughput	340 Mbps	
NGFW Throughput	180 Mbps	
CAPWAP Throughput	1.5 Gbps	
Virtual Domains (Default / Maximum)	10 / 10	
Maximum Number of FortiAPs (Total / Tunnel Mode)	10 / 5	
Maximum Number of FortiTokens	100	
Maximum Number of Registered FortiClients	200	
High Availability Configurations	Active / Active, Active / Passive, Clustering	
<b>Dimensions</b>		
Height x Width x Length (inches)	1.5 x 8.5 x 6.3	1.5 x 8.5 x 6.3
Height x Width x Length (mm)	38 x 216 x 160	38 x 216 x 160
Weight	1.9 lbs (0.9 kg)	1.9 lbs (0.9 kg)
Form Factor	Desktop	Desktop
<b>Environment</b>		
Power Required	100–240V AC, 50–60 Hz	
Maximum Current	110 V / 1.5 A, 220 V / 0.75 A	110 V / 1.5 A, 220 V / 0.75 A
Power Consumption (Average / Maximum)	11.7 / 14 W	
Heat Dissipation	40 BTU/h	
Operating Temperature	32–104°F (0–40°C)	
Storage Temperature	-31–158°F (-35–70°C)	
Humidity	20–90% non-condensing	
Operating Altitude	Up to 7,400 ft (2,250 m)	
<b>Compliance</b>		
Safety	FCC Part 15 Class B, C-Tick, VCCI, CE, UL/cUL, CB	
<b>Certifications</b>		
	ICSA Labs: Firewall, IPsec, IPS, Antivirus, SSL-VPN	

Note: All performance values are "up to" and vary depending on system configuration. IPsec VPN performance is based on 512 byte UDP packets using AES-256+SHA1. NGFW performance is measured with Flow AV (Full Mode), IPS and Application Control enabled, based on Enterprise Traffic Mix. SSL Inspection is measured with IPS enabled and HTTP traffic, using TLS v1.2 with AES256-SHA. CAPWAP performance is based on 1444 byte UDP packets.

## ORDER INFORMATION

Product	SKU	Description
FortiGate 60E	FG-60E	10x GE RJ45 ports (including 7x Internal ports, 2x WAN ports, 1x DMZ port). Maximum managed FortiAPs (Total / Tunnel) 10 / 5.
FortiWiFi 60E	FWF-60E	10x GE RJ45 ports (including 7x Internal ports, 2x WAN ports, 1x DMZ port), Wireless (802.11a/b/g/n/ac). Maximum managed FortiAPs (Total / Tunnel) 10 / 5.



GLOBAL HEADQUARTERS  
Fortinet Inc.  
899 Kifer Road  
Sunnyvale, CA 94086  
United States  
Tel: +1.408.235.7700  
[www.fortinet.com/sales](http://www.fortinet.com/sales)

EMEA SALES OFFICE  
905 rue Albert Einstein  
Valbonne 06560  
Alpes-Maritimes, France  
Tel: +33.4.8987.0500

APAC SALES OFFICE  
300 Beach Road 20-01  
The Concourse  
Singapore 199555  
Tel: +65.6395.2788

LATIN AMERICA SALES OFFICE  
Sawgrass Lakes Center  
13450 W. Sunrise Blvd., Suite 430  
Sunrise, FL 33323  
United States  
Tel: +1.954.368.9990